

BESMAK Electromechanical Pipe Ring Stiffness Test Machine



TECHNICAL FEATURES:

Maximum Load Capacity:	Up to 200 kN
Frame Type :	Rigid frame in 2-Column construction.
Electronic Unit:	New generation EDC Electronic Control Unit with 1 kHz (1000 data/sec) data acquisition and control system
Control:	1) Servo Electromechanical 2) EDC Controller 3) Besmak Universal Testing Software (Load and Deformation/Displacement Control)
Accuracy:	± 0.5%
Load Measuring:	Class 0.5
Resolution:	20 bit
Displacement Resolution:	0.0001 mm
Speed of Displacement Control:	0.01 - 500 mm/min
Vertical Test Area :	3000 mm <i>*contact us for other requirements</i>
Horizontal Test Area :	650 mm (Horizontal Daylight) <i>*contact us for other requirements</i>
Software:	Besmak Universal Testing Software
Power Requirement:	220 V, 50/60Hz
Ambient Operating Temperature:	0°C~40°C, Moisture 10% - 90%

FEATURES:

BESMAK Pipe Ring Stiffness Test Machine, designed with rigid frame in Column type construction. Can perform tensile, compression, bend, creep, and cyclic tests on all raw materials and finished goods. These testing instruments are engineered for precision, built for durability, and offer flexibility for changing requirements. They are designed with features that increase testing efficiency and improve the testing experience for the operator.

- Meets or exceeds requirements of all national and international standards; namely ISO, ASTM, BS, DIN, EN, and AFNOR
- Convenient working height and ergonomic controls improve operator productivity and comfort

- Thousands of accessories to meet test requirements in almost any application or industry: biomedical, automotive, electronics, plastics, metals, composites, elastomers, aerospace, textiles, and many more
- Remote control unit with Live Display, Soft keys and Specimen Protect for enhanced usability and productivity

Load Measurement:

- High precision load measurement with sensitive load cell class 0.5
- Load Cells can be replaced according to different load ranges to make much more accurate and sensitive measurements
- Load measurement resolution is 20bit

Applied Standards:

- BESMAK BMT-E series UTM Meets or exceeds requirements of all national and international standards, namely ISO, ASTM, BS, DIN, EN, and AFNOR

*Extra apparatus and/or accessories may needed for each standard

Testing Applications:

- Almost any application or industry,
 - Biomedical
 - Automotive
 - Electronics
 - Plastics
 - Metals
 - Composites
 - Elastomers
 - Aerospace
 - textiles and many more

ELECTRONIC CONTROL SYSTEM:

BESMAK Pipe Ring Stiffness Test Machine is controlled by “**New generation EDC Electronic Control Unit**”. EDC electronic control system is world’s one of the sensitive electronic control systems and used since 1975. It controls hydraulic and/or electromechanical systems by closed-loop control method.

Test can be done with both load and displacement/deformation control mode with closed loop control technology. With displacement/deformation control, user can obtain much more accurate and sensitive readings. Load of failure, strain of failure, max load, max strain, etc. can be obtained real-time at 1 kHz (1000 data/sec).

Load cell, video extensometer, automatic extensometer, etc. can be connected automatically to electronic control units. Besmak Universal Testing Software and EDC controller can recognize these sensors automatically due to sensor Eeprom connectors, and calibration can easily be done with the software.



Controller has the excessive load protection system and can detect the failure automatically. Also, user can reset the load at the beginning of the test which gave easiness in daily tests.

User can control test, can adjust device settings and can control hydraulic grip by PC software and/or Remote control panel. Tests can be carried out by a single button.

Controller can detect indirect loads before the test (these loads can occur because of grips and mechanical system, etc.) and can prevent them affecting the test results. *Sample protection feature.

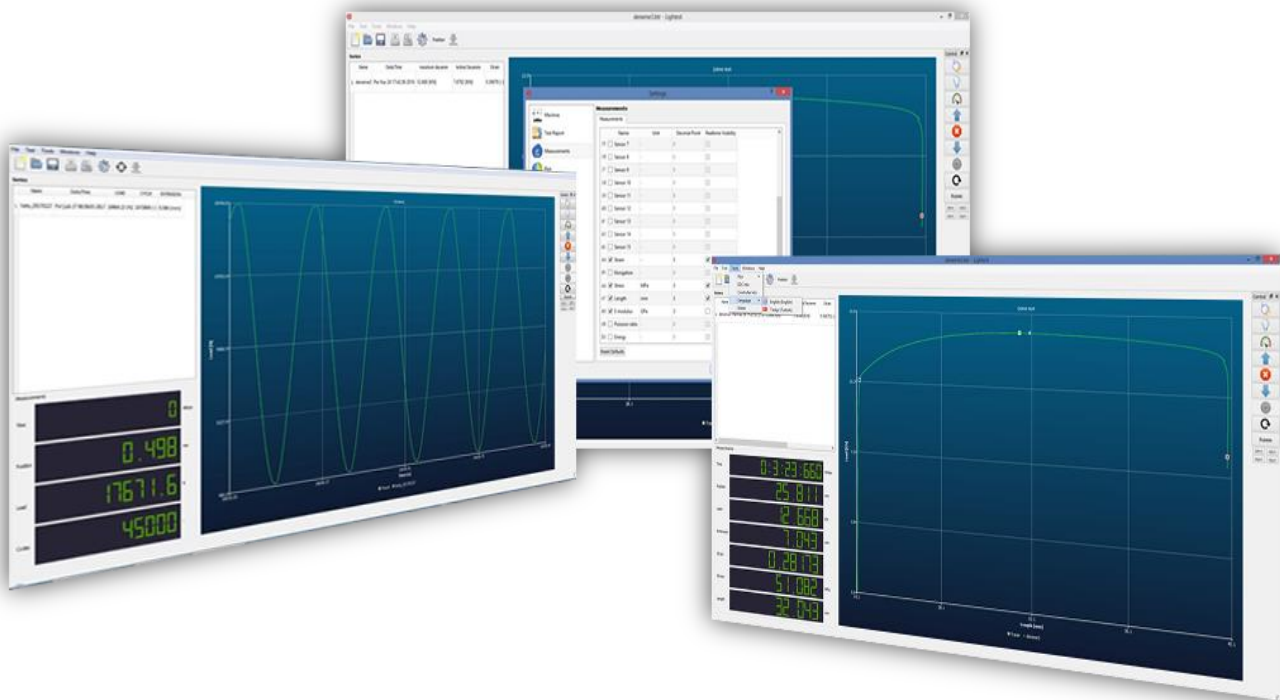
Return of piston can be done automatically by electronic controller unit and Remote control panel.

Besmak Universal Testing Software has all SI and metric units of sensors. Electronic control unit can be connected to computer via USB or Ethernet.

Machine has emergency button which stops the test immediately when activated. User can use the button whenever an unwanted situation occurs.

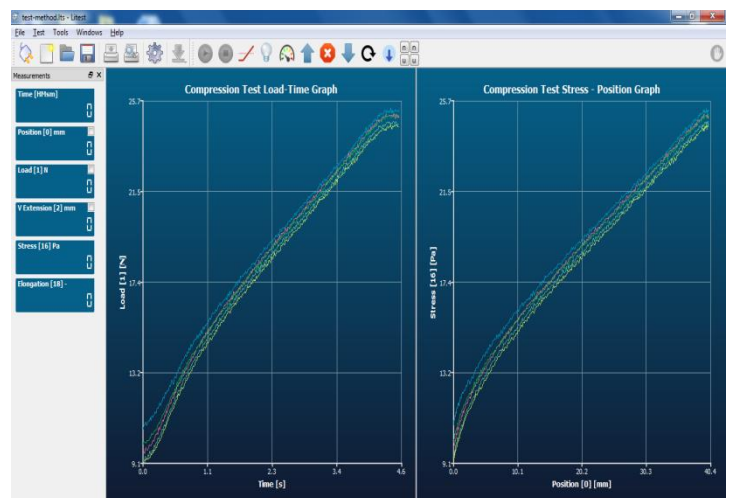
BESMAK UNIVERSAL TESTING SOFTWARE:

Tests can be carried out on computer by Besmak Universal Testing Software. Real time data, test graphs and results can be observed on software. Results and graphs can be saved on computer and printed. User can personalize the software and report format according to company/corporation etc. Besmak Universal Testing Software is compatible with Windows7 and higher operating systems. Universal Testing Software provides solutions to all type of test applications.

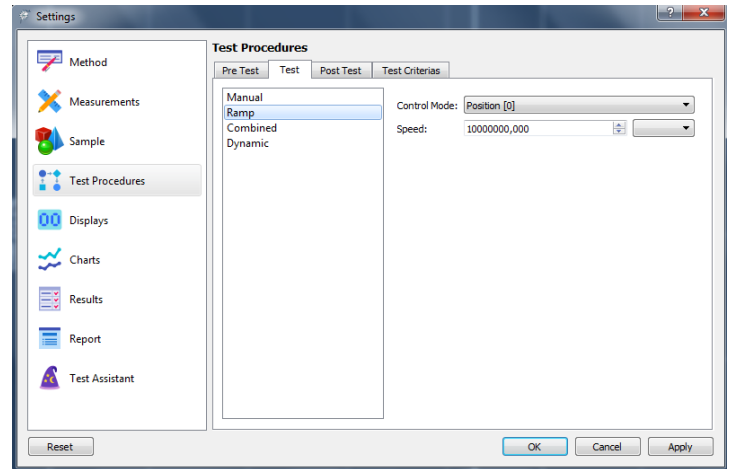


Key Features of Software:

- User Friendly, easy to use interface
- Easy-to-understand icons and workflows make it easy to train new or experienced users, simplifying operator training, and allowing you to start testing even faster
- Meticulously crafted visual design, gives the most comprehensive view of the test workspace
- User can make and save test templates with specific name / test standard etc.
- Automatic Save option for test report and/or raw values
- User defined graph axis to get real time vales of desired sensor



- User defined report setup and results definition
- High speed data display with 1 kHz data acquisition speed
- Automatic sensor and setup identification
- Series test option to combine test graphs and results of multiple samples
- Real time graphic analyzing feature to see graph data point to point
- User can perform tensile, compression, bending, shear and special test easily
- Test settings, test templates, loading sequences and device settings can be easily done by the software
- Besmak Universal Testing software supports multi languages which make it attractive for international users
- We provide online support to our customers.
- Over load detection and sample protection features for advance testing applications to protect sensitive samples
- Auto tare option for each connected sensor
- Auto positioning and return after test feature for actuator
- Software supports All SI and Matric units for sensors and measurements
- PC connection with USB cable



Subject to technical modification without notice.